



EXSTREAMER 1000



Quick Install Guide Version 1.1

Network audio encoder / decoder with I/O for professional audio and broadcast applications

Package contents

- a Exstreamer 1000
- b Power supply
- c Plugs (screw block terminals: 2 x 6 pin, 4 pin, 2 pin)

Available cables (not included)

- d Y-Cable Analog (DSub9 M to 2 x XLR M & 2 x XLR F)
- e Y-Cable Digital (DSub9 M to XLR M & XLR F)

Support

For support please contact your local dealer or visit www.barix.com.

© Barix AG 8/2008, all rights reserved. All information is subject to change without notice. All mentioned trademarks belong to their respective owners and are used for reference only. Barix, Exstreamer and SonicIP are trademarks of Barix AG, Switzerland, and are registered in certain countries.



Front view



1 2 3 4

1 Reset button

A brief press of the button will reset the device. Holding the reset button pressed in for approximately 10 seconds will reset the device and restore the factory default settings when the button is released.

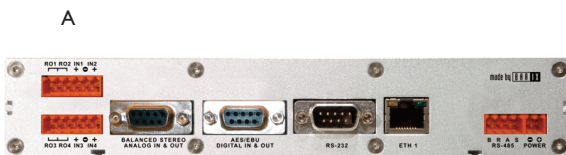
2 EXT.

USB interface solely for flash memory sticks (not supplied)

3 Green and red LEDs for device status display

4 Green LEDs (1...4) for I/O status display

Rear view



A B C D E F G H

A I/O I&2 (6 pin screw terminal block plug)

Pin	Description
1	Output Relay 1
2	Common Relay 1&2
3	Output Relay 2
4	Input 1
5	Ground (-) Input 1&2
6	Input 2

B I/O 3&4 (6 pin screw terminal block plug)

Pin	Description
1	Output Relay 3
2	Common Relay 3&4
3	Output Relay 4
4	Input 3
5	Ground (-) Input 3&4
6	Input 4

C Analog audio In & Out (DSub 9 pin female)

Pin	Description
1	Left Out+ [Hot]
2	Left Out- [Cold]
3	Ground [G]
4	Right In+ [Hot]
5	Right In- [Cold]
6	Right Out+ [Hot]
7	Right Out- [Cold]
8	Left In+ [Hot]
9	Left In- [Cold]

D AES/EBU In & Out (DSub 9 pin female)

Pin	Description
1	AES In- [Cold]
2	AES In+ [Hot]
3	Ground [G]
4	AES Out+ [Hot]
5	AES Out- [Cold]
6	Not connected
7	Ground [G]
8	Ground [G]
9	Not connected

E RS-232 serial port (DSub 9 pin male)

Pin	Description
1	Not connected
2	Receive Data [RxD]
3	Transmit Data [TxD]
4	V+ 14.6V, 100mA max
5	Ground [GND]
6	Not connected
7	Ready to Send [RTS]
8	Clear to Send [CTS]
9	Not connected

F LAN port 10/100 (RJ45)

G RS-485 bus (4 pin screw terminal block plug)

Pin	Description
1	485 B
2	Reference *
3	485 A
4	Shield

*The reference pin is connected via 100 Ohm to the internal ground !

H Power (4 pin screw terminal block plug)

Pin	Description
1	Vin -
2	Vin+ 24..48VDC \pm 20%

1 Installation

STEP 1

Plug a standard (straight) network cable (not included) into the network port (F) of the Exstreamer and the other end into your hub or switch. You can also use a crossover network cable (not included) for a direct connection to your PC.

STEP 2

- A) If you are using analog equipment: Plug the Y-Cable Analog (d, not included) into the Analog audio In & Out socket (C) and connect an XLR cable (not included) from the male XLR (output) to an input of your mixing console or monitoring device.
- B) If you are using digital equipment (AES/EBU): Connect it via the Y-Cable Digital (e, not included) in to the socket D.
- C) If you are not yet ready to connect the device in to your audio equipment, you will still be able to configure the Exstreamer. This will involve assigning an IP address to the unit using one of 3 methods: ARP (see section 3 of this guide), Telnet, or a serial cable: refer to the manual for these procedures.

STEP 3

Connect the Power supply (b) to the device (socket H) and then to an appropriate electrical outlet.

STEP 4

The Exstreamer will now search for a DHCP server to get an IP address and announce it over the audio outputs. Example: 192.168.0.12 (Voice: one nine two...)
Make sure you write this IP address down. Proceed to section "2 Network configuration by web browser".

Troubleshooting

If no DHCP server is found then our IPzator function will search the network for a free IP address (this could take up to 5 minutes). If the IP address is not announced check if the green LED (right LED on top of network port C) is lit.

If it stays dark check your network cabling. If the front LEDs (3) stay dark check the power cabling (step 3).

If it still fails, revert the device to factory defaults by pressing the Reset button for about 10 seconds while the Exstreamer is powered.

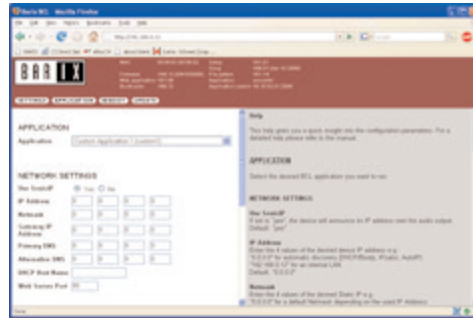
2 Network configuration by web browser

STEP 1

Open your web browser.

STEP 2

Enter the IP address that was announced by the Exstreamer and press Enter. Example: 192.168.0.12



STEP 3

Enter an IP address into the 4 IP address fields. At default it is 0.0.0.0 for automatic discovery (BootP, DHCP).

STEP 4

In normal operating conditions leave the Netmask as is.

STEP 5

The Gateway, primary and alternative DNS IP addresses as well as Sonic IP can be left at default for now.

STEP 6

Hit the Apply button to save all changes. The Exstreamer will reboot with the Static IP address. Please continue with section "4 Next steps" on the last page.

3 Setting temporary IP address using ARP command

This procedure is used to temporarily set the IP address for first time browser access to the Exstreamer, in the case where you have no audio cables connected, and hence do not know the current IP address of the Exstreamer.

Attention: After this procedure the temporary IP will be active only as long as the Exstreamer stays powered. After a restart the procedure has to be repeated unless you have configured the IP address as described in the previous chapter.

Preparation

Use either a “crossover” network cable between the Exstreamer and the PC or use two network cables to connect the Exstreamer and the PC to a network switch and power the Exstreamer.

STEP 1

Make sure that you have a valid IP address configured on your PC (e.g. 192.168.0.2)

STEP 2

Open a command window.

Windows : click on “Start”, click on “Run..”, in the “Open” field type `cmd`, click on “OK”.

OSX / Linux : Open a terminal window.

STEP 3

Please proceed to step 4 if you used a “crossover” network cable in the preparation step above.

To ensure that we use a free IP address (not already used by another device in the network) we have to use the Ping command. In this example we assume the PC to have the IP address “192.168.0.2” and want to check if “192.168.0.6” is free.

To do so type `ping 192.168.0.6` and hit the “Enter” key.

If you get a reply (IP already used) then try to ping another IP until you find one that is not used.

If the request times out (no reply) then the “pinged” IP is free and we can continue with the next step.

STEP 4

Look for the Exstreamer’s MAC address printed on a label placed on the bottom of the device (12 hex digits, separated by a hyphen every 2 digits)

Type into the windows command window

```
arp -s 192.168.0.6 00-08-E1-00-B1-77
```

and hit the “Enter” key (replace the digits according to your devices MAC address).

On a OSX or Linux system type into the terminal

```
arp -s 192.168.0.6 00:08:E1:00:B1:77
```

STEP 5

Now we have to make the Exstreamer listen to the IP address “192.168.0.6” using the Telnet command.

To do so type into the command window
`telnet 192.168.0.6 1` and hit the “Enter” key (the number “one” must be there for this command to work correctly !!!)

The Exstreamer will refuse the connection on port 1 immediately but will be available for web access on the IP address used as long as the device stays powered.

STEP 6

To check if the Exstreamer is responding you can use the ping command again. To do so type

```
ping 192.168.0.6
```

 and hit the “Enter” key.

If you do get a reply the IP address 192.168.0.6 can be used to access the Exstreamer using a web browser. Please go back to section “2 Network configuration by web browser”.

If you do get “request timed out” then please repeat step 6 carefully (you most likely mistyped the telnet command) or repeat the entire procedure.

4 Next steps

Download the user manual from www.barix.com.

Read it to configure the Exstreamer for your purpose.

Check out the Barix user forum on www.barix.com for additional information.

For information about our products, manuals, technical documentations and latest version of firmware please visit www.barix.com.

Barix AG
Seefeldstrasse 303
8008 Zürich
SWITZERLAND

www.barix.com