



The Pilote

Solid state show controller with integrated audio player

product information

The Pilote combines the simple effectiveness of timeline-based show control with digital audio playback to provide a show controller that can manage small to medium installations alone, or large installations when multiple Pilotes are networked together.

Simple programming, means that all technicians will be able to create and modify projects, thus lifting the restriction of having a few specialist programmers in the team.

A great price - performance ratio means that the Pilote is also significantly more competitive than the closest competitor.



Looping is intuitive!

The programming software 'Looping' is exceptionally intuitive. Anyone with a bit of technical experience should be ready and able to program it within an hour

Variable triggering

8 independent variables can be used to create hundreds of different triggering conditions, vastly multiplying the logic options available to the programmer

Integrated Audio Player

Link directly to your playback system and enjoy complete shows perfectly synched to the audio

Multiple Timelines

Run up to 16 simultaneous timelines independently to control multiple zones, or split the programming into small modules

Intelligent code learning

Ability to easily 'learn' or create control codes for RS232, IR, or Ethernet directly from an external source. Projects can also be loaded onto the Pilote at distance over Ethernet

DMX sequence recording

Record DMX sequences from any lighting desk AND modify them if you want in Looping

Reliable

No moving parts (storage on Flash Card) and no MS Windows (the Pilote isn't a PC!). 3 years warranty as standard

RSF - EXTREME Products

Reliability... EXTREME

- Designed for 24/7/365 time operation.
- Fully solid state with no moving parts.

Service... EXTREME

- 3-year swap warranty within 24 hours.

References... EXTREME

Our customers range from the smallest regional museums to the largest attraction parks. Some of our important references: Disneyland Paris (FR), 'Futuroscope de Poitiers' (FR), The Ronald Reagan Library (USA), The British Museum (UK), Stonehenge (UK)...



Commercial Division

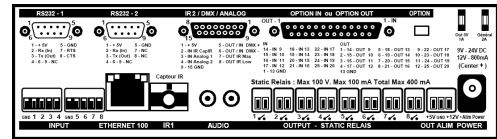
RSF Europe SA
rue de l'industrie, 18
L-8399 Windhof
G. D. of Luxembourg

Tel. +352 49 74 20 40
Fax +352 49 74 20 50
info@rsf-int.com
www.rsf-int.com



Manufacturer

RSF
45, Avenue Marcel Dassault
(Parc de la Plaine)
31500 Toulouse - France
Tel. +33 5 61 20 79 09
Fax +33 5 61 80 00 94



Technical specifications

Rear View

IN/OUT

| | |
|-----------------------|--|
| Control – dry contact | 8 TTL input contacts expandable to 32 with extension cards |
| Analog inputs | 2 x 0 to 5V DC |
| Static relays | 8 outputs (max 100V—100mA per relay) expandable to 32 with extension cards |
| Control | 2 RS232 bidirectional male DB9 connectors |
| | 2 IR outputs, 1 on female DB15 (hi/lo power), 1 on 3.5mm female jack (with RSF MoIR) |
| | 1 IR input for remote control on front panel |
| | 1 IR input for code learning |
| | 1 IR input for remote control at distance with CapIR via 3.5mm jack (max 100m) |
| | Ethernet RJ45 connector 10/100Base-T for codes via UDP or TCP/IP |
| Lighting control | 1 DMX IN on DB15 for sequence learning |
| | 1 DMX OUT on DB15 (max 250 channels) |
| PC Interface | 1 USB type B to load projects |
| | Ethernet can be used to load projects |
| DC out (protected) | 5V & 12V DC |
| Audio Output | 2 x RCA / Cinch |
| Storage | Internal flash memory (expandable with SD card on front panel) |

Audio Characteristics

| | |
|---------------|---|
| Audio Format | CD 16 bit quality with MPEG1/2 Layer II/III (MP3) compression |
| Bandwidth | 20Hz to 20KHz |
| THD | less than 0,01% |
| Dynamic range | 92 dB |

Indicators

| | |
|------------------|----------------------|
| Power indicator | 1 LED |
| Status indicator | 2 LEDs |
| Display | OLED 128 x 64 pixels |

Power supply 12V - DC, 800mA (external)

Maximum consumption 500mA

Enclosure..... Black metal box

Dimensions (enclosure)..... 220mm L, 42mm H, 125mm P, 1/2 19" rack unit

Weight 250 Gr

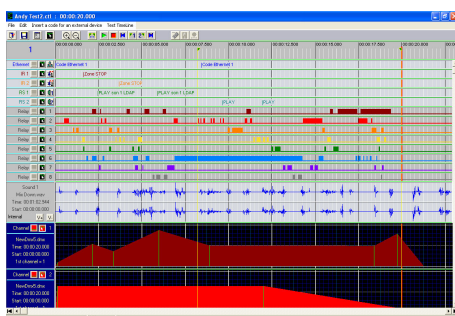
Environment

| | |
|-------------|----------------------------|
| Temperature | 0°C (32°F) to 50°C (122°F) |
| Humidity | 0-90% |

Warranty 3 years

Accessories

| | |
|------------|---|
| CapIR | CapIR for distance remote control sensing |
| BorExDIA | Adapter to convert Sub-D15 connector to Phoenix Blocks |
| IT12IN | 12 Digital IN extension card |
| BorExIN | Adapter to convert Sub-D25 connector of IT12IN to Phoenix Blocks |
| IT12OUT | 12 static relay OUT extension card |
| BorExOUT | Adapter to convert Sub-D25 connector of IT12OUT to Phoenix Blocks |
| RMKPILOTE | 19" Rack Mounting Kit |
| MicroRAD | Miniature PIR sensor |
| MicroTaCAP | Capacitive sensor for creating a virtual button through non-ferrous materials |
| CapIR | IR signal receptor |
| MoIR | IR emitter |
| IRRCDA | IR remote control |



This is a screenshot from 'Looping', the programming software for the Pilote Audio. (In descending order) Ethernet, RS232, IR, relay, audio, and DMX outputs can be seen on the timeline.

The waveform display of the audio track allows precise programming of the entire show in the timeline, and the graphical representation of the DMX channels allows accurate mental simulation of lighting levels throughout the presentation.

The view of the timeline can be zoomed in and out, allowing both an accurate configuration environment for each step, and a broad overview of the whole show.